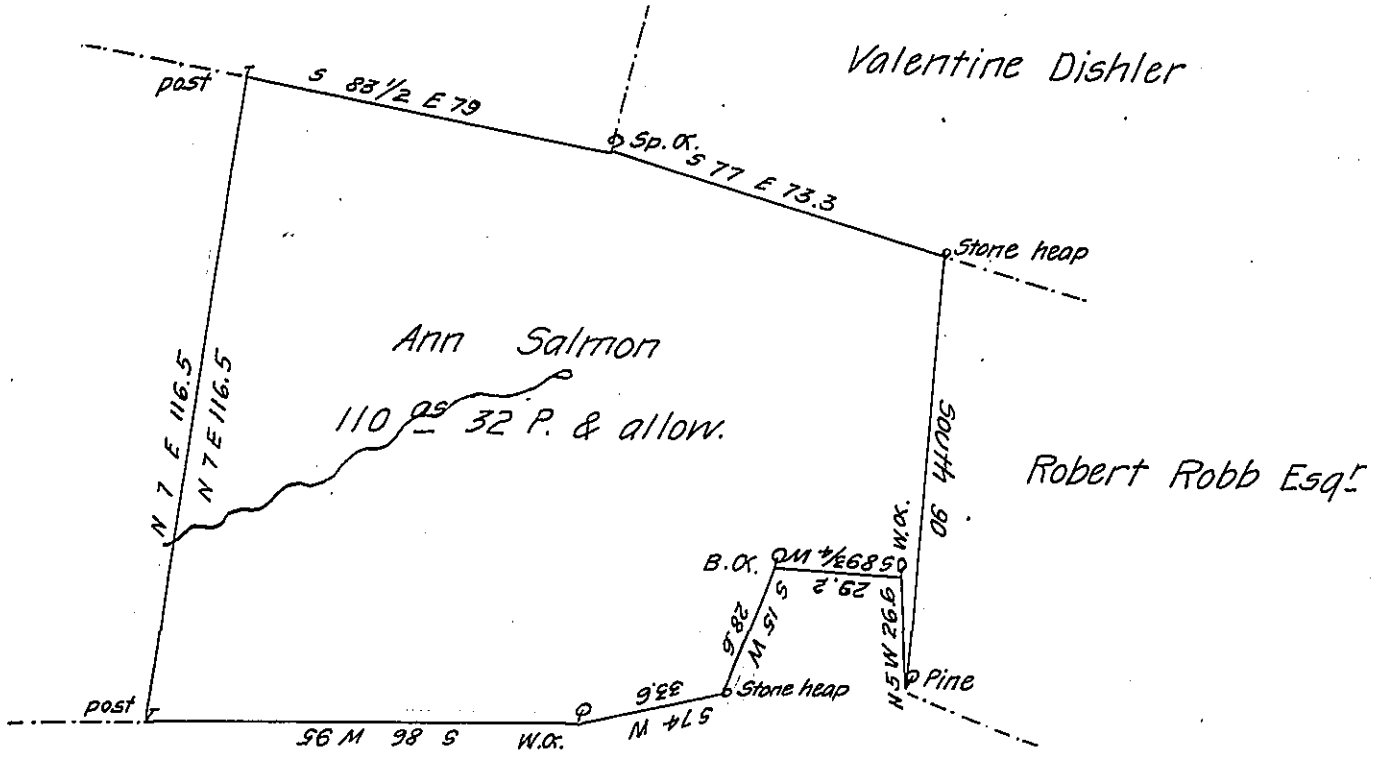


Elizabeth Flatt

Ann Salmon

Valentine Dishler



Robert Robb Esq.

Joseph Carpenter

& Enos Lunday

Situate in Muncy Township Lycoming County formerly Northumberland. Surveyed on the 5-day of November 1803 for Ann Salmon by virtue of her warrant bearing date on the 17-day of December 1793. Containing one hundred ten acres and thirty two Perches with the usual Allowance of Six P. Cent.

Henry Donnel D.S.

To Samuel Cochran Esq.  
Surveyor General

IN TESTIMONY that the above is a copy of the original remaining on file in the Department of Internal Affairs of Pennsylvania, made conformably to an Act of Assembly approved the 16th day of February, 1833, I have hereunto set my Hand and caused the Seal of said Department to be affixed at Harrisburg, this sixth day of December 1906

*Goac A. Perry*  
Secretary of Internal Affairs.